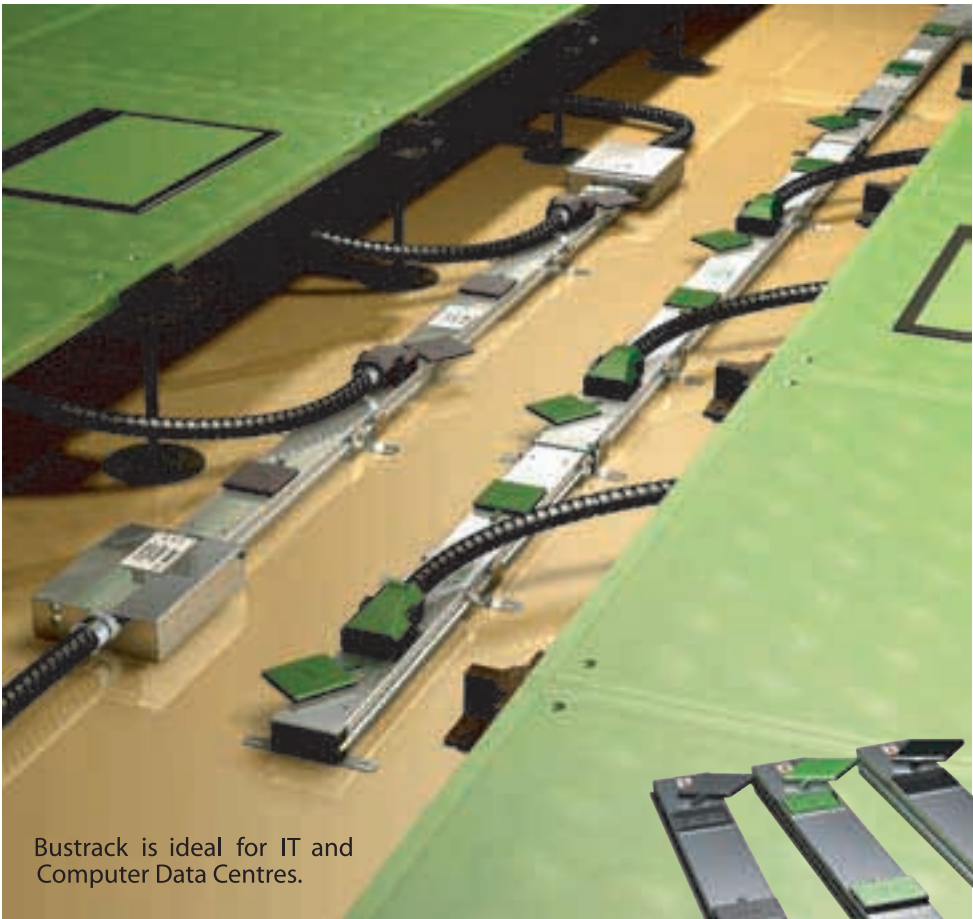


DAVIS[®]

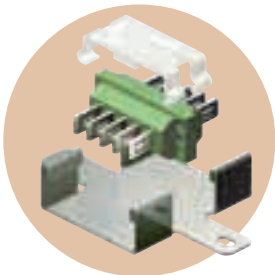
BUSTRACK BUSWAY SYSTEM

63A BUSTRACK

DAVIS Bustrack System is designed for today's modern office environment which demands a highly reliable and flexible power distribution system to be used under a raised-floor environment. The bustrack is designed for single-phase, multi-phase or multi-circuit power distribution system and comes with a standard earth or an extra clean earth.



Bustrack is ideal for IT and Computer Data Centres.



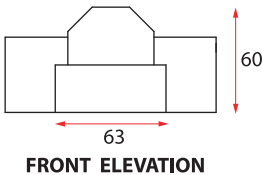
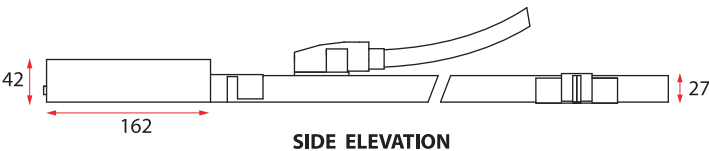
INTERCONNECTOR

The interconnector allows rapid push-fit connections of bustracks without the need for any tools. A trunking lock device provides for additional security of each connection. The fixing bracket helps to secure each interconnector unit onto the floor.

Type	Product Code
Standard Earth	SFBT-3-63-IC
Clean Earth	SFBT-5-63-IC
3-phase	SFBT-5-63-IC

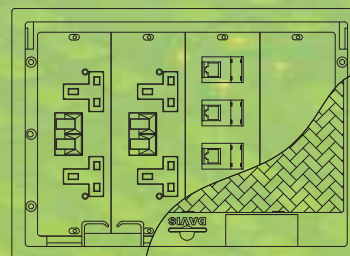
DAVIS BUSTRACK is rated at 63A single-phase or three-phase with standard tap-offs at intervals of 300mm pitch. The bustrack sockets are fully shuttered and each comes with a dust proof cover and a positive locking device to ensure that the plug is in full electrical contact when pushed in.

Track Length	No. of Tap-offs	3 bars-240V Standard Earth (Grey)	4 bars-240V Clean Earth (Green)	5 bars-415V 3-phase (Black)
0.6m	2	SFBT-3-63-0.6	SFBT-4-63-0.6	SFBT-5-63-0.6
1.2m	4	SFBT-3-63-1.2	SFBT-4-63-1.2	SFBT-5-63-1.2
2.4m	8	SFBT-3-63-2.4	SFBT-4-63-2.4	SFBT-5-63-2.4



QUANTEC® SERVICE BOX

The overall dimension of DAVIS QUANTEC® Raised Floor Service Box is 339mm(W) x 244mm(D) x 85mm(H). The recommended raised floor mounting hole to be cut in the floor panel is 327mm x 232mm.



Type	Product Code
3-Compartment	QRF3
4-Compartment	QRF4

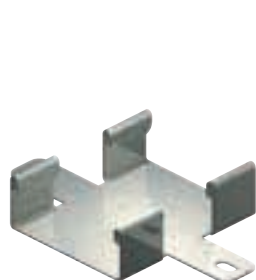


Minimum floor void 65mm

TAP-OFF UNIT

The tap-off unit comprises a 32A unfused tap-off plug fitted with a 3m length 4mm² PVC cable enclosed in a 16mm flexible conduit. Colour coded plugs and sockets are used to differentiate between standard earth system (Grey), clean earth system (Green) and normal 3-phase system (Black).

Conduit Length	3 pins - 240V Standard Earth (Grey)	4 pins - 240V Clean Earth (Green)	5 pins - 415V 3 Phase (Black)
3m	SFBT-3-63-TO	SFBT-4-63-TO	SFBT-5-63-TO



FIXING BRACKET

The fixing bracket is used to hold the bustrack onto the floor slab which can be raised off the slab to clear any obstruction from other cables or services when needed.

Track Length	No. of Pcs Req.	Product Code
0.6m	1	SRBT-FB
1.2m	1	SRBT-FB
2.4m	3	SRBT-FB



CABLE FEED UNIT

A flexible oversized cable feed unit is designed to ease the termination of cables feeding the bustrack system. Each unit comes with a trunking lock device for additional security.

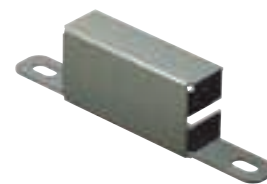
Type	Product Code
Standard Earth	SFBT-3-63-FU
Clean Earth	SFBT-4-63-FU
3-phase	SFBT-5-63-FU



CORNER UNIT

A corner unit comes with two numbers of cable feed unit. It may be used for bends or as a flyover over an obstacle.

Type	Product Code
Standard Earth	SFBT-3-63-CU
Clean Earth	SFBT-4-63-CU
3-phase	SFBT-5-63-CU



TRUNKING END CAP

The trunking end cap completes the bustrack run without any cable termination.

Type	Product Code
Standard Earth	SRBT-TC
Clean Earth	SRBT-TC
3-phase	SRBT-TC

*All dimensions are in millimeters