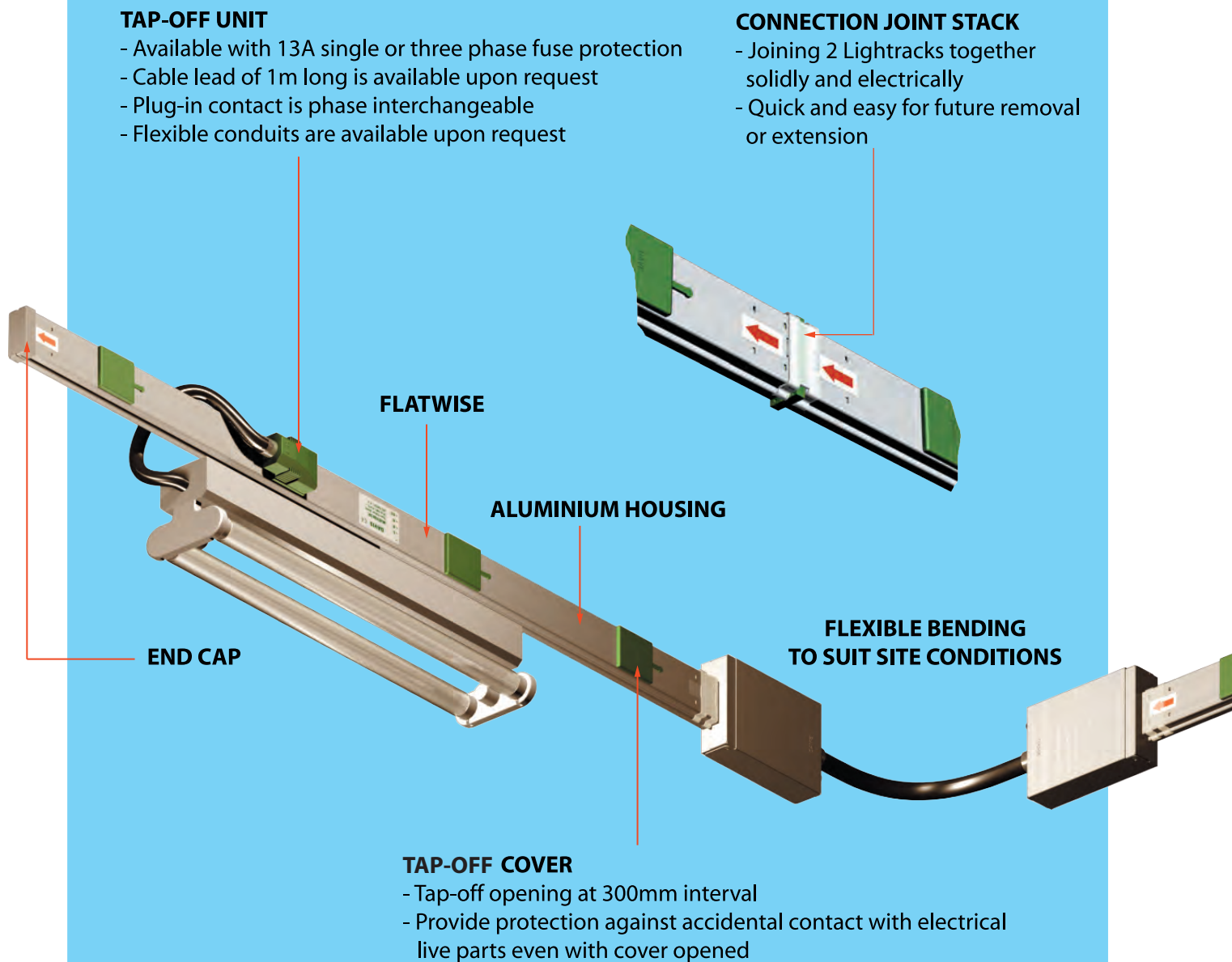


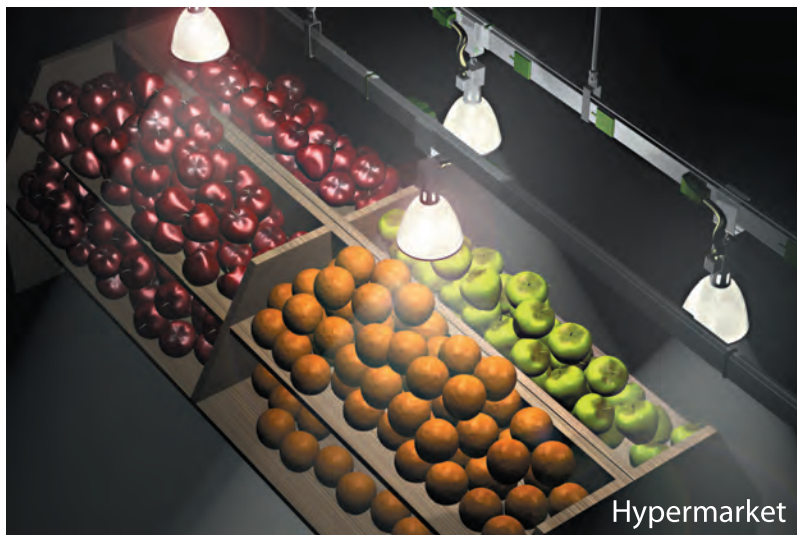
DAVIS[®]

LIGHTRACK BUSWAY SYSTEM

40A - 63A LIGHTRACK BUSWAY

DAVIS Lightrack Busway System is designed for special applications where electrical energy can be shared efficiently and with flexibility for lighting fixtures especially in hypermarkets and shopping malls, greenhouses, exhibition halls, display areas, theatres, workshops or any other facilities that may require such features. In places where flexibility is greatly needed, DAVIS Lightrack busway is ideal to meet such continuous lighting load changes.





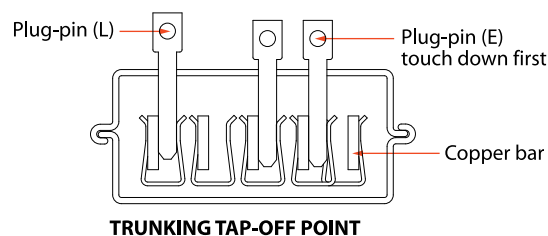
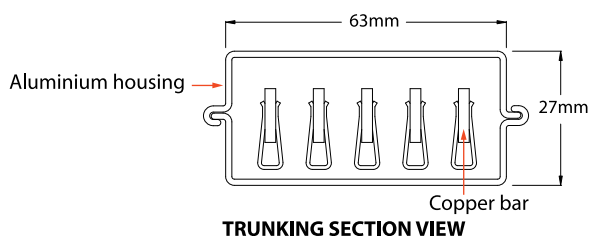
Ceiling Mounted

Hypermarket

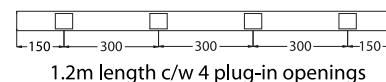
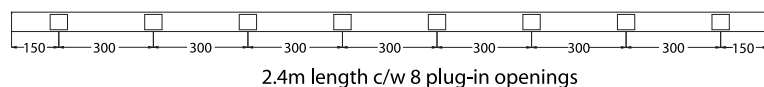
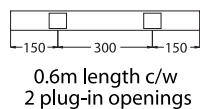
Wall Mounted



Conference hall



- Small size (27 X 63mm), light weight, quick and easy to install.
- Enclosure is manufactured from rigid extruded aluminium with aesthetic features.
- protection against electric shock.



40A - 63A Lightrack Busway

Track Length	No. of Tap-offs	3 bars-240V 1 CIRCUIT (Grey)	4 bars-240V 2 CIRCUITS (Green)	5 bars-240V 3 CIRCUITS (Black)
0.6m	2	SFLT-3-63-0.6	SFLT-4-63-0.6	SFLT-5-63-0.6
1.2m	4	SFLT-3-63-1.2	SFLT-4-63-1.2	SFLT-5-63-1.2
2.4m	8	SFLT-3-63-2.4	SFLT-4-63-2.4	SFLT-5-63-2.4

* The interconnector is included in each length of the trunking unit

* The connection between two lengths of Lightrack can be assembled without using tools